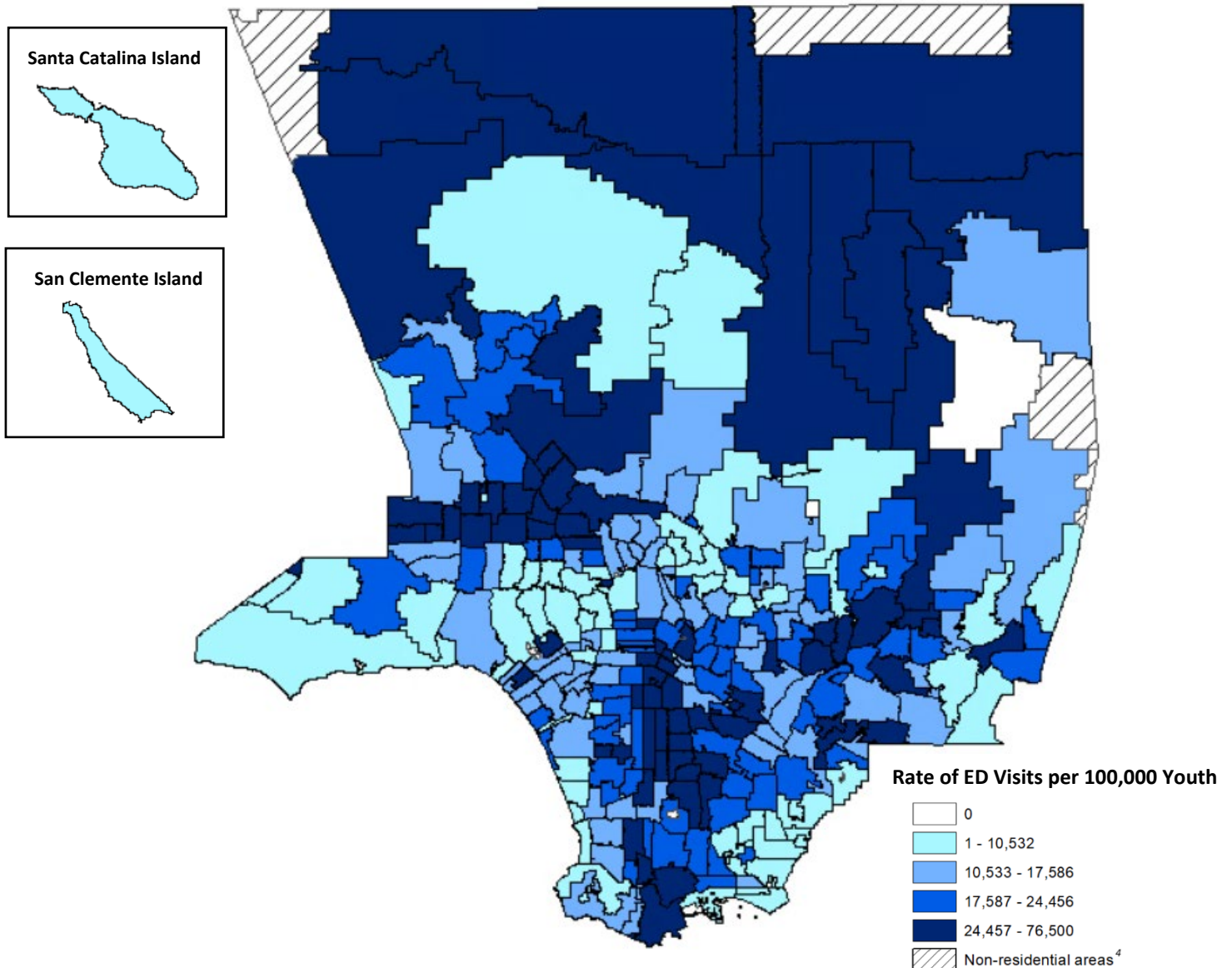


# EMERGENCY DEPARTMENT (ED) VISITS FROM PARTICIPATING HOSPITALS AMONG LOS ANGELES COUNTY RESIDENTS AGED 10-24 YEARS - 2024

Key Takeaway: This map reflects the distribution and coverage of overall emergency department visits by ZIP code<sup>1</sup> in Los Angeles County as captured by the LA County Hospital Emergency Department Data Project.

- Total population estimates<sup>2</sup> of 10–24 year olds = 1,971,966.
- Rate of ED visits among 10–24 year olds (Jan 1, 2024–Dec 31, 2024)<sup>3</sup> = 22,045 per 100,000 youth.

## 2024 All Cause Emergency Department Visits in Los Angeles County (per 100,000 Youth Aged 10-24)



<sup>1</sup>Five-digits ZIP Codes are used by the U.S. Postal Service to deliver mail more effectively. The first digit divides the United States into 10 equivalent areas. Within each state, there are further geographical areas defined by the second and third digits. The fourth and fifth digits identify post office, station, branch or local delivery area. The ZIP Codes included are patient residences provided by the patient upon intake.

<sup>2</sup>July 1, 2020 Population Estimates (Second Provisional), prepared by Hedderson Demographic Services for Los Angeles County Internal Services Department, released October 2022. SPA, HD and SD geographies integrated in by Population Health Assessment Team, Office of Health Assessment and Epidemiology.

<sup>3</sup>These data are collected by Los Angeles County Department of Public Health Acute Communicable Disease Control Program in partnership with local hospitals. Currently, 90% of hospitals with EDs in LA County share their syndromic hospital emergency department data with the Los Angeles County Public Health Department. ED visits for any reason are included the dataset. This is not exclusive to suicide attempts, self-harm and suicide ideation. Additionally multiple EDs visits per one person are included in this dataset.

<sup>4</sup>ZIP Codes for which no population data is available due to non-residential areas (e.g. Dodger Stadium) or ZIP Codes that cross county boundaries: 90639, 90747, 91522, 91709, 91759, 90261, 91023, 91125, 90090, 93523, 90073, 90630, 93243, 90623, 92397.

This document was prepared with ArcGIS 10.6.1 in June 2025.

© 2025 California Department of Public Health. Funded under contract #22-11307

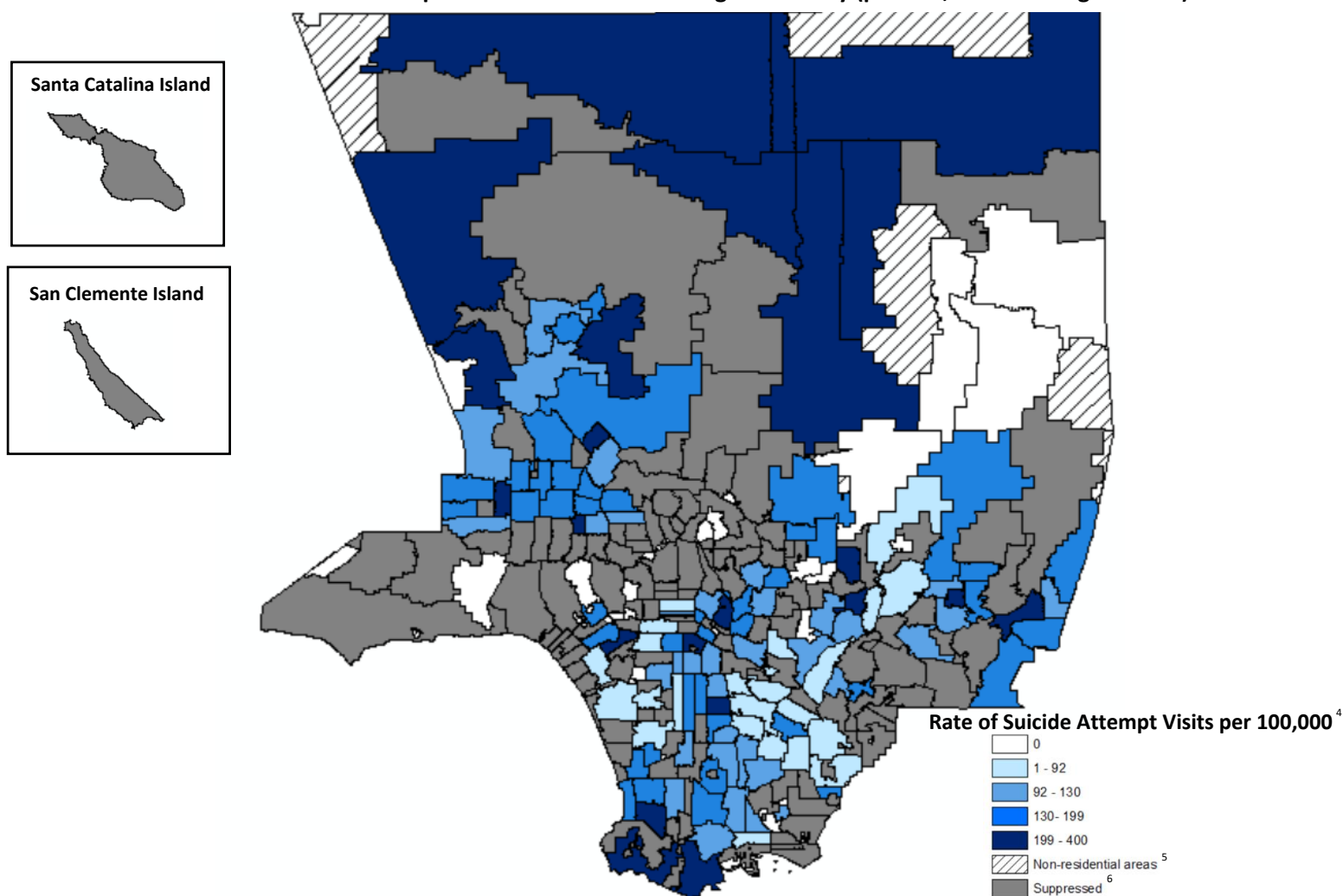


# SUICIDE ATTEMPT-CLASSIFIED<sup>1</sup> VISITS FROM PARTICIPATING HOSPITALS AMONG LOS ANGELES COUNTY RESIDENTS AGED 10-24 YEARS - 2024

Key Takeaway: Consistent with other data sources, higher rates of suicide attempt-classified visits among 10-24 year olds in 2024 are located in Antelope Valley and some parts of the Santa Clarita Valley.

- Total population estimates<sup>2</sup> of 10–24 year olds = 1,971,966.
- Rate of suicide attempt-classified emergency department (ED) visits among 10–24 year olds (Jan 1, 2024–Dec 31, 2024) = 109.9 per 100,000 youth.
  - Data for 20.7% of ED visits with number of suicide attempt-classified ED visits <6 per ZIP Code<sup>3</sup> were suppressed to maintain patient confidentiality.
- 71 (23%) ZIP Codes were excluded due to missing or incomplete ZIP codes (3.9%), missing population data (2.9%), or due to being outside Los Angeles County (16.2%).

## 2024 Suicide Attempt-Classified Visits in Los Angeles County (per 100,000 Youth Aged 10-24)



<sup>1</sup>Emergency department data are collected by Los Angeles County Department of Public Health Acute Communicable Disease Control Program in partnership with local hospitals. Suicide attempt-classified visits are classified based on the [CDC Suicide Attempts \(v2\)](#) query, and include a range of outcomes from being treated and released from the emergency department, in-patient hospitalization and death. Currently, 90% of hospitals with EDs in LA County share their syndromic hospital emergency department data with the Los Angeles County Public Health Department. Multiple ED visits per one person are included in this dataset.

<sup>2</sup>July 1, 2020 Population Estimates (Second Provisional), prepared by Hedderson Demographic Services for Los Angeles County Internal Services Department, released October 2022. SPA, HD and SD geographies integrated in by Population Health Assessment Team, Office of Health Assessment and Epidemiology.

<sup>3</sup>Five-digits ZIP Codes are used by the U.S. Postal Service to deliver mail more effectively. The first digit divides the United States into 10 equivalent areas. Within each state, there are further geographical areas defined by the second and third digits. The fourth and fifth digits identify post office, station, branch or local delivery area. The ZIP Codes included are patient residences provided by the patient upon intake.

<sup>4</sup>Ranges were selected based on quartiles (the 25<sup>th</sup>, 50<sup>th</sup> and 75<sup>th</sup> percentiles).

<sup>5</sup>ZIP Codes for which no population data is available due to non-residential areas (e.g. Dodger Stadium) or ZIP Codes that cross county boundaries: 90639, 90747, 91709, 91759, 90261, 91023, 91125, 90090, 93523, 90073, 90630, 93243, 90623, 92397.

<sup>6</sup>To protect patient confidentiality, rates were suppressed if ZIP codes had fewer than 6 suicide attempt-classified visits. Suppressed rates represents 20.7% of suicide attempt-classified visits.

This document was prepared with ArcGIS 10.6.1 in June 2025.

© 2025 California Department of Public Health. Funded under contract #22-11307